



# GAT MONTHLY MEMBERSHIP PROGRESS REPORT

Results as of: 3/31/2022

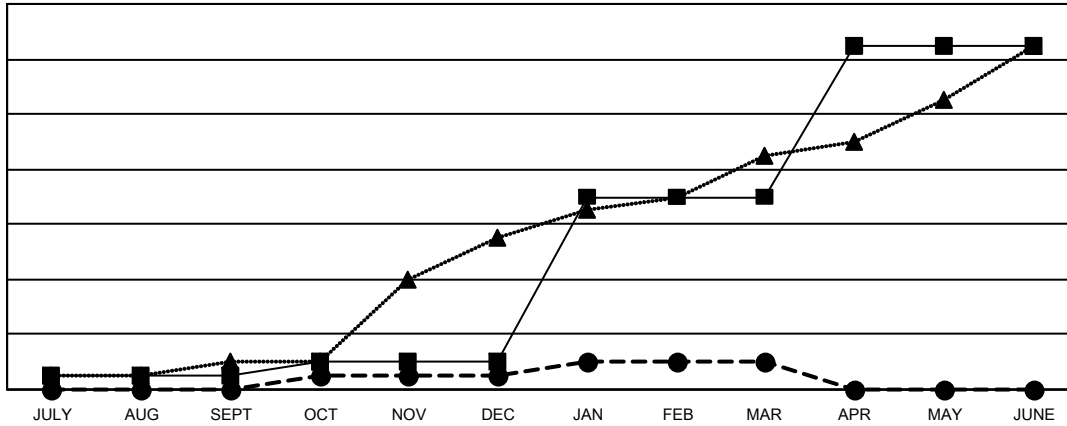
Multiple District 201

LOCATION: AUSTRALIA

Clubs			
RESULTS FOR 2021-2022			
QUARTER	NEW CLUB GOAL	NEW CLUBS	DROPPED CLUBS
JULY/AUG/SEPT	1	0	12
OCT/NOV/DEC	1	1	4
JAN/FEB/MAR	12	1	7
APR/MAY/JUNE	11	0	0

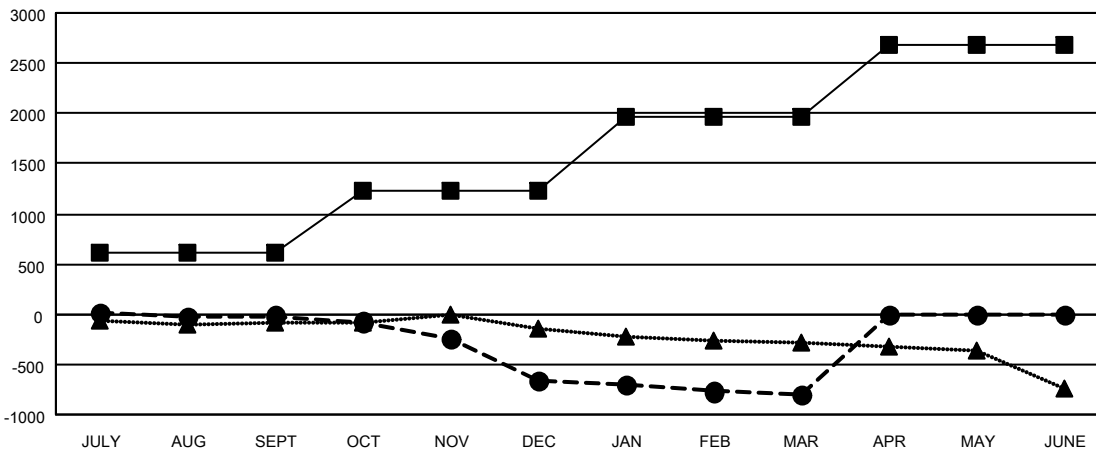
Members			
RESULTS FOR 2021-2022			
QUARTER	MEMBER GROWTH NET GOAL	MEMBER GROWTH ACTUAL	DROPPED MEMBERS ACTUAL (including transfers)
JULY/AUG/SEPT	618	628	548
OCT/NOV/DEC	612	485	1,041
JAN/FEB/MAR	732	641	683
APR/MAY/JUNE	713	0	0

GOALS AND ACTUAL NEW CLUBS CUMULATIVE



- CURRENT YEAR GOALS FOR NEW CLUBS
- CURRENT YEAR ACTUAL NEW CLUBS
- ▲- LAST YEAR ACTUAL NEW CLUBS

GOALS AND ACTUAL MEMBERS CUMULATIVE



- MEMBER GROWTH NET GOAL
- MEMBER GROWTH ACTUAL
- ▲- LAST YEAR MEMBERSHIP ACTUAL

DROPPED CLUBS: 23	
<b>DROPPED MEMBERS</b>	
DECEASED	239
CLUB CANCELLED	5
OTHER	2,028
<b>TOTAL</b>	<b>2,272</b>

613 CLUBS OF 1187 ADDED 1 OR MORE NEW MEMBERS

[CLICK HERE FOR CUMULATIVE MEMBERSHIP DATA](#)

GENDER DISTRIBUTION	
MALE	14,553 (63.31%)
FEMALE	8,430 (36.67%)
NON BINARY	1 (0.00%)
PREFER NOT TO ANSWER	2 (0.01%)
<b>TOTAL FAMILY UNIT MEMBERS</b>	<b>3,650</b>
<b>FAMILY MEMBERS PAYING HALF DUES</b>	<b>1,854</b>